

Interior Unit

TERRACE LEVEL

UNIT DETAILS

2 BEDROOM

2 BATHROOM

TERRACE

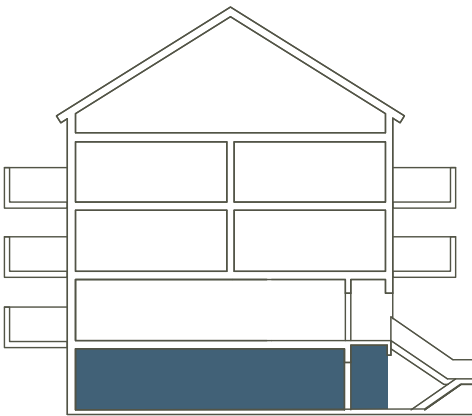
LIVING SPACE

INTERIOR 993 SQ. FT.

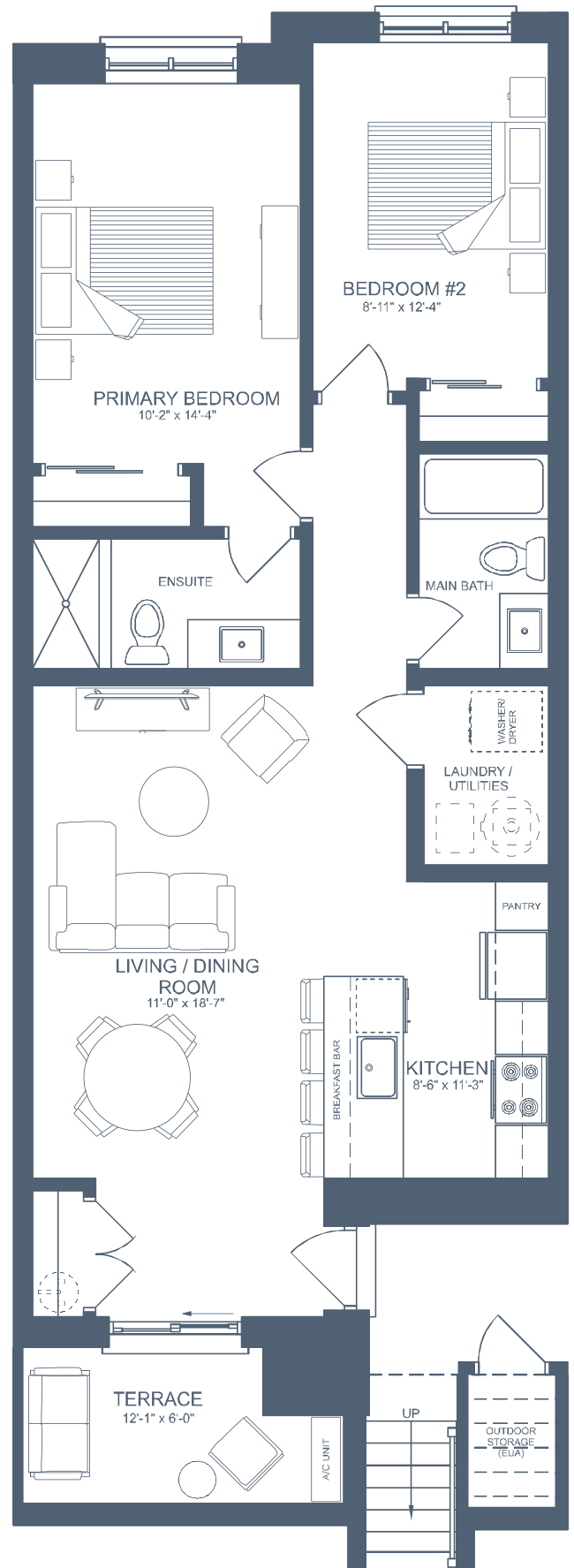
EXTERIOR 73 SQ. FT.

TOTAL 1,066 SQ. FT.

CROSS SECTION:



■ = UNIT LOCATION



All drawings are an artist's concept and may vary slightly from the final product. E. & O.E. Actual usable floor space may vary from stated area, and square footage has been calculated based on usable living space according to the Tarion rules. Drawings may show optional features which may not be included in the base price. Bulkheads and box outs may be required as chases for plumbing and mechanical. Location of mechanical room equipment will be located by the builder and may change based on plan. Number of steps in front entry may vary based on grade.

Interior Unit

MAIN LEVEL

UNIT DETAILS

2 BEDROOM

2 BATHROOM

BALCONY

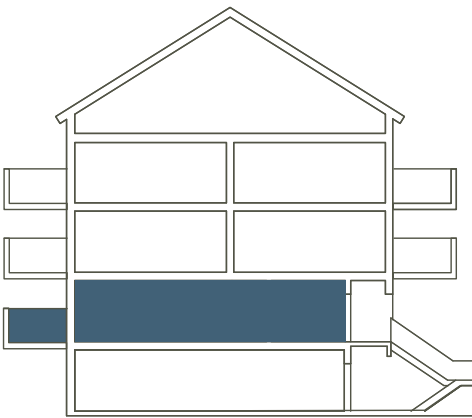
LIVING SPACE

INTERIOR 869 SQ. FT.

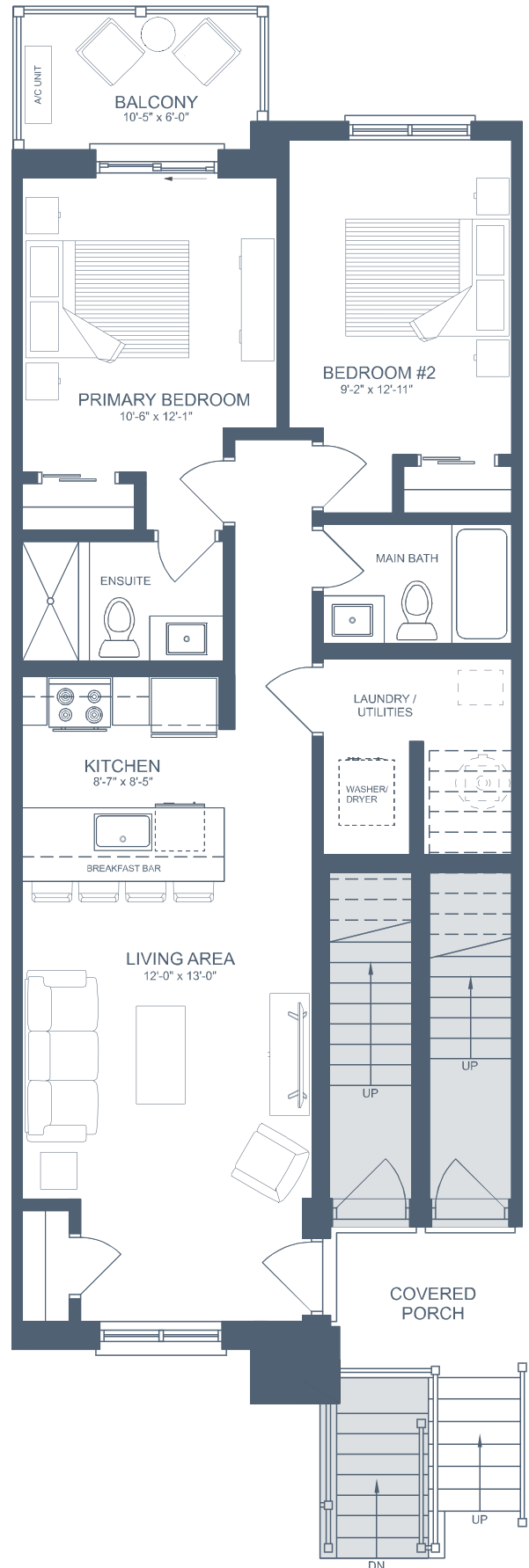
EXTERIOR 63 SQ. FT.

TOTAL 932 SQ. FT.

CROSS SECTION:



■ = UNIT LOCATION



All drawings are an artist's concept and may vary slightly from the final product. E. & O.E. Actual usable floor space may vary from stated area, and square footage has been calculated based on usable living space according to the Tarion rules. Drawings may show optional features which may not be included in the base price. Bulkheads and box outs may be required as chases for plumbing and mechanical. Location of mechanical room equipment will be located by the builder and may change based on plan. Number of steps in front entry may vary based on grade.

Interior Unit

FRONT TWO-STOREY

UNIT DETAILS

2 BEDROOM

2 BATHROOM

2 BALCONIES

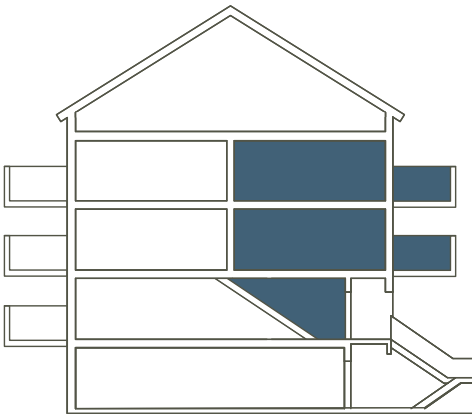
LIVING SPACE

INTERIOR 1,106 SQ. FT.

EXTERIOR 126 SQ. FT.

TOTAL 1,232 SQ. FT.

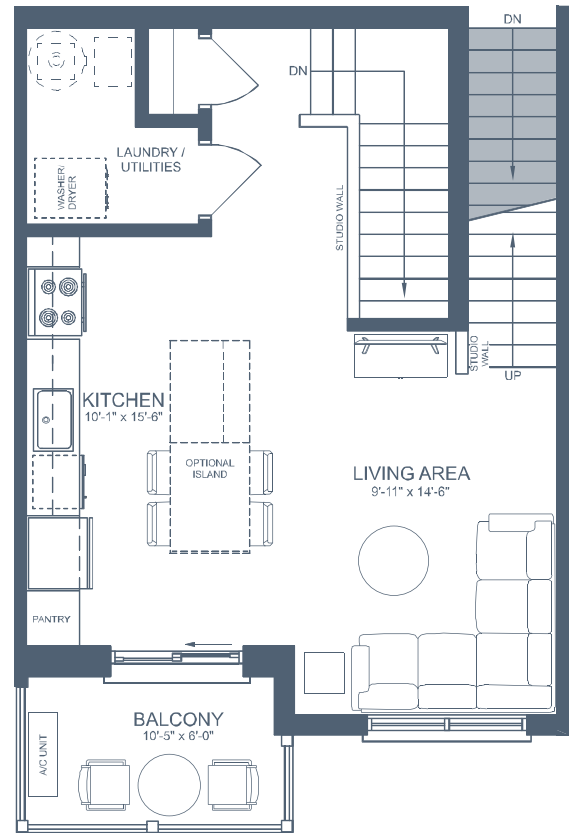
CROSS SECTION:



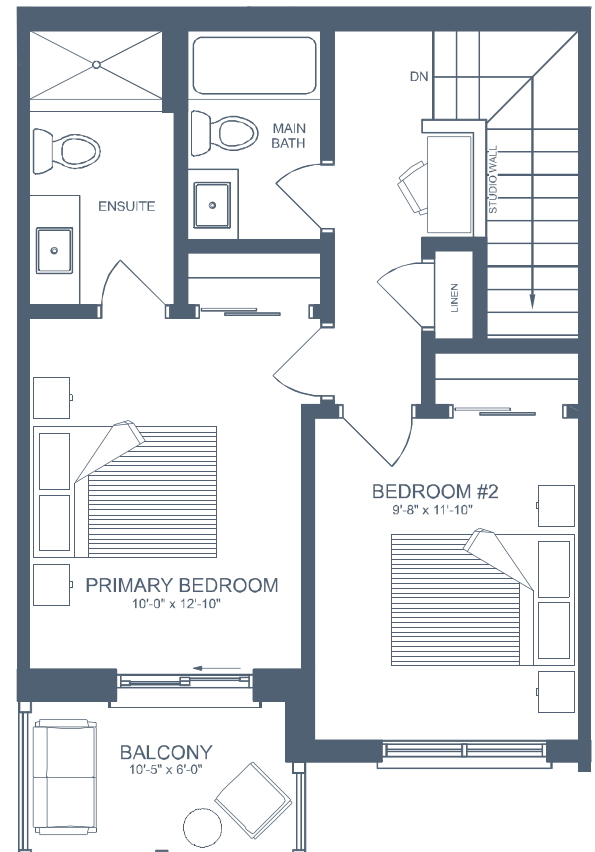
■ = UNIT LOCATION

All drawings are an artist's concept and may vary slightly from the final product. E. & O.E. Actual usable floor space may vary from stated area, and square footage has been calculated based on usable living space according to the Tarion rules. Drawings may show optional features which may not be included in the base price. Bulkheads and box outs may be required as chases for plumbing and mechanical. Location of mechanical room equipment will be located by the builder and may change based on plan. Number of steps in front entry may vary based on grade.

SECOND LEVEL



THIRD LEVEL



Interior Unit

REAR TWO-STOREY

UNIT DETAILS

2 BEDROOM

2 BATHROOM

2 BALCONIES

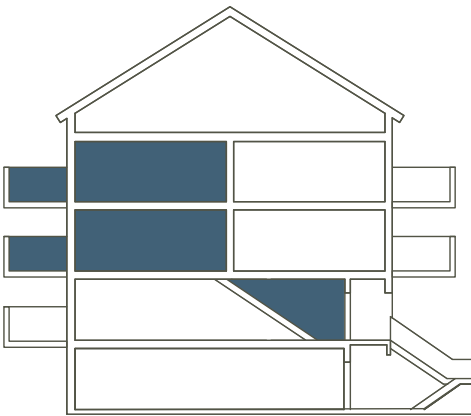
LIVING SPACE

INTERIOR 1,120 SQ. FT.

EXTERIOR 126 SQ. FT.

TOTAL 1,246 SQ. FT.

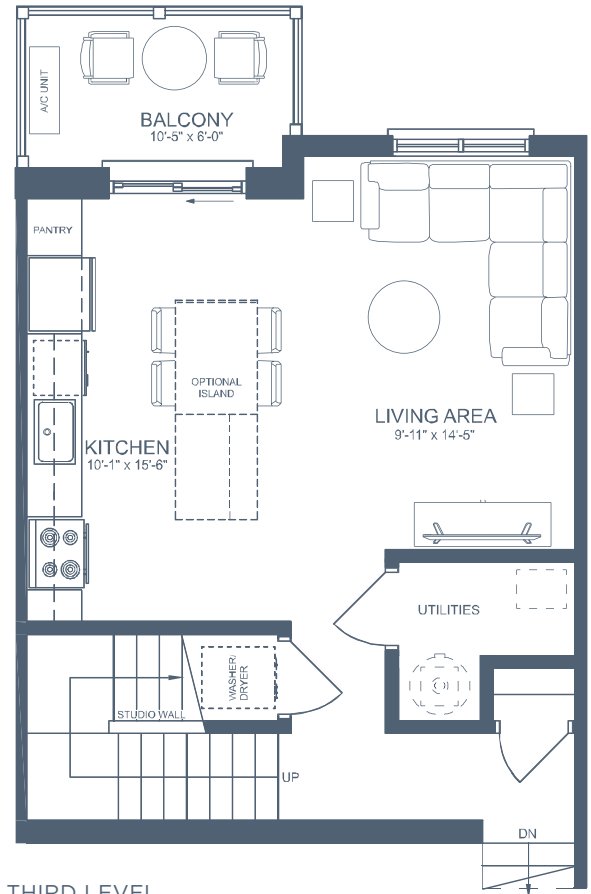
CROSS SECTION:



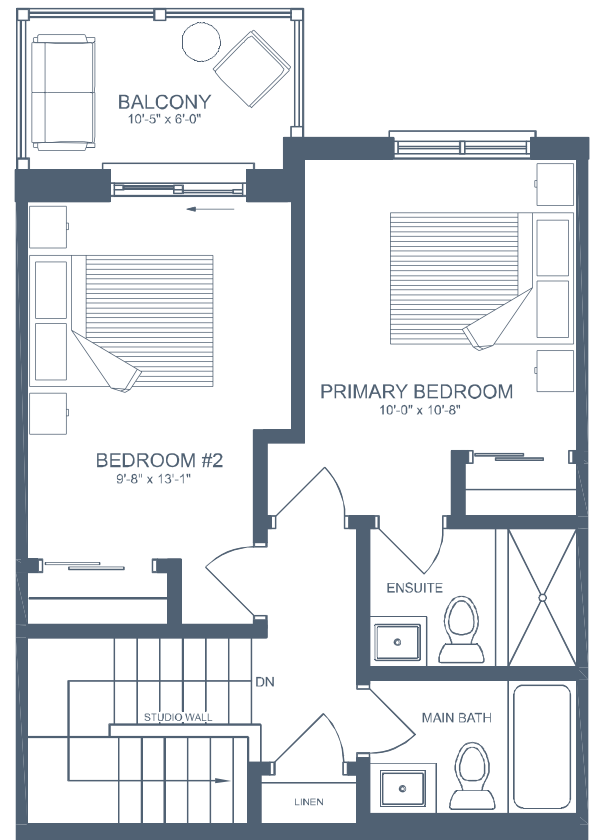
■ = UNIT LOCATION

All drawings are an artist's concept and may vary slightly from the final product. E. & O.E. Actual usable floor space may vary from stated area, and square footage has been calculated based on usable living space according to the Tarion rules. Drawings may show optional features which may not be included in the base price. Bulkheads and box outs may be required as chases for plumbing and mechanical. Location of mechanical room equipment will be located by the builder and may change based on plan. Number of steps in front entry may vary based on grade.

SECOND LEVEL



THIRD LEVEL



End Unit

TERRACE LEVEL B

UNIT DETAILS

2 BEDROOM

2 BATHROOM

TERRACE

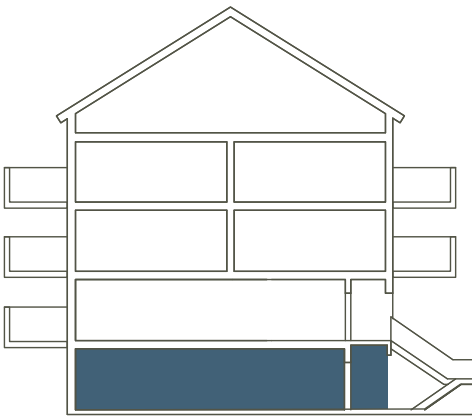
LIVING SPACE

INTERIOR 900 SQ. FT.

EXTERIOR 73 SQ. FT.

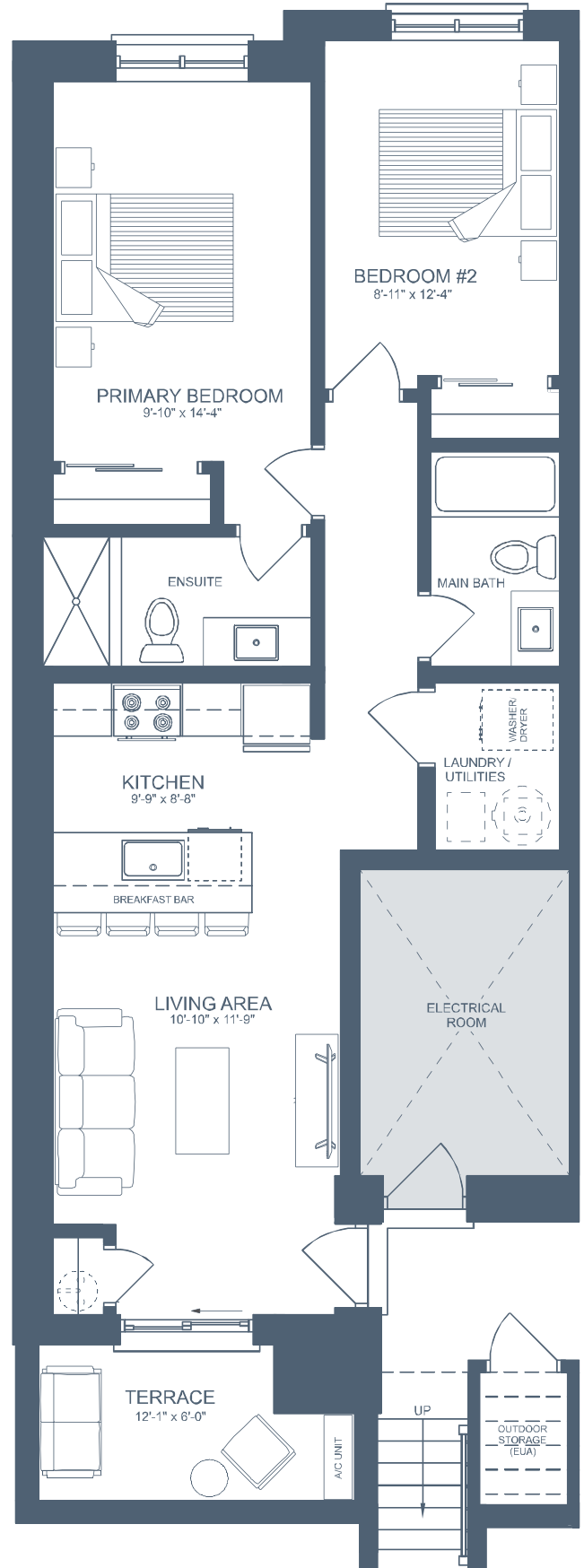
TOTAL 973 SQ. FT.

CROSS SECTION:



■ = UNIT LOCATION

All drawings are an artist's concept and may vary slightly from the final product. E. & O.E. Actual usable floor space may vary from stated area, and square footage has been calculated based on usable living space according to the Tarion rules. Drawings may show optional features which may not be included in the base price. Bulkheads and box outs may be required as chases for plumbing and mechanical. Location of mechanical room equipment will be located by the builder and may change based on plan. Number of steps in front entry may vary based on grade.



End Unit

MAIN LEVEL

UNIT DETAILS

2 BEDROOM

2 BATHROOM

BALCONY

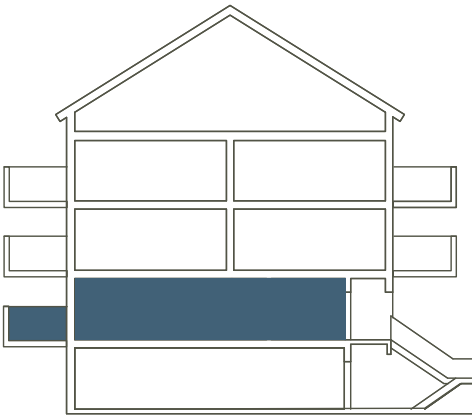
LIVING SPACE

INTERIOR 885 SQ. FT.

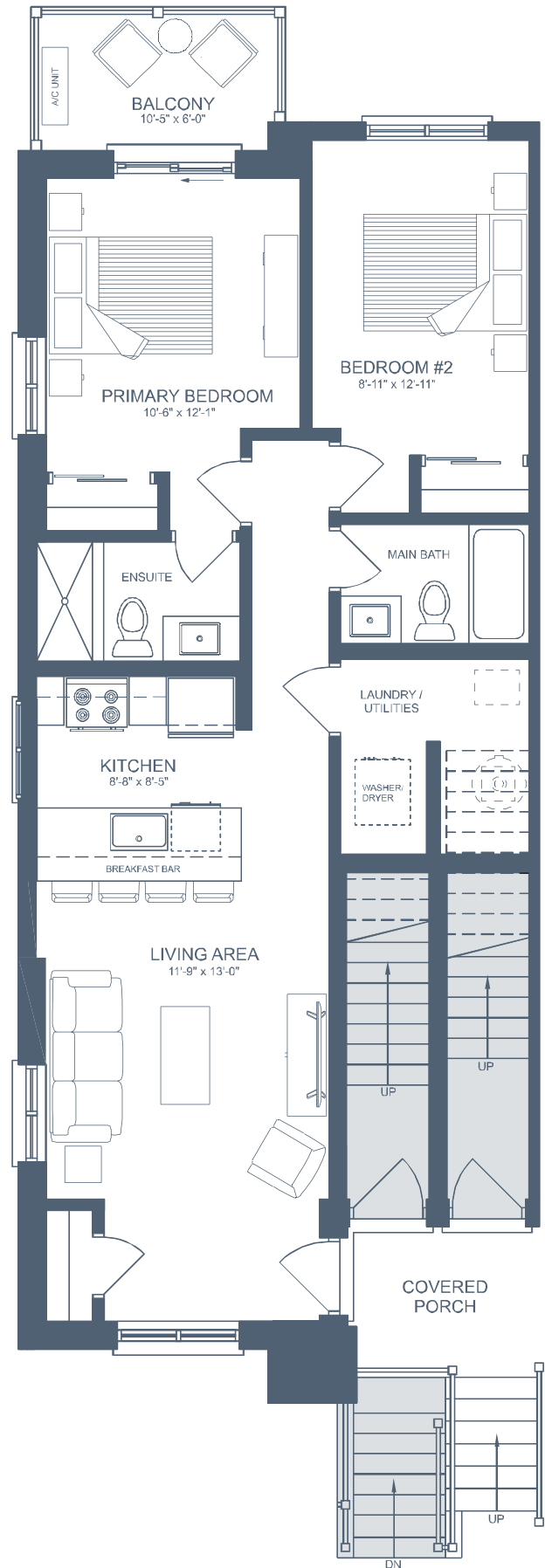
EXTERIOR 63 SQ. FT.

TOTAL 948 SQ. FT.

CROSS SECTION:



■ = UNIT LOCATION



All drawings are an artist's concept and may vary slightly from the final product. E. & O.E. Actual usable floor space may vary from stated area, and square footage has been calculated based on usable living space according to the Tarion rules. Drawings may show optional features which may not be included in the base price. Bulkheads and box outs may be required as chases for plumbing and mechanical. Location of mechanical room equipment will be located by the builder and may change based on plan. Number of steps in front entry may vary based on grade.

End Unit

FRONT TWO-STOREY

UNIT DETAILS

2 BEDROOM

2 BATHROOM

2 BALCONIES

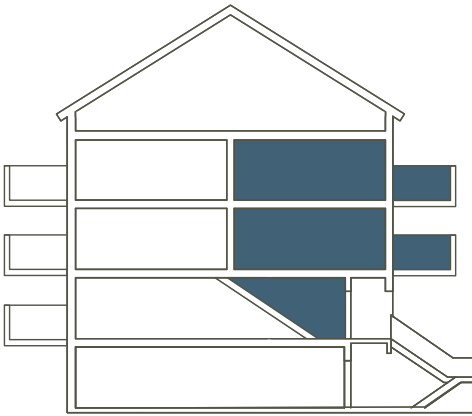
LIVING SPACE

INTERIOR 1,122 SQ. FT.

EXTERIOR 126 SQ. FT.

TOTAL 1,248 SQ. FT.

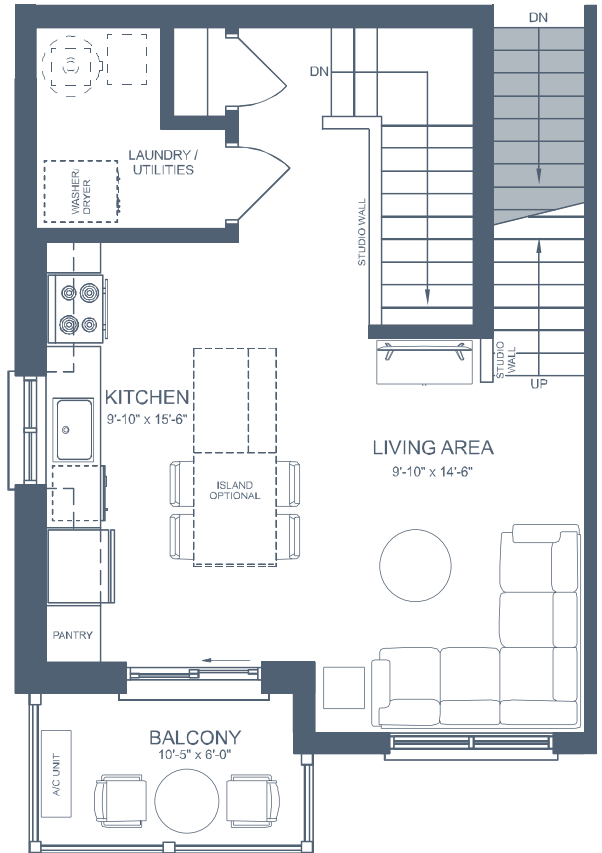
CROSS SECTION:



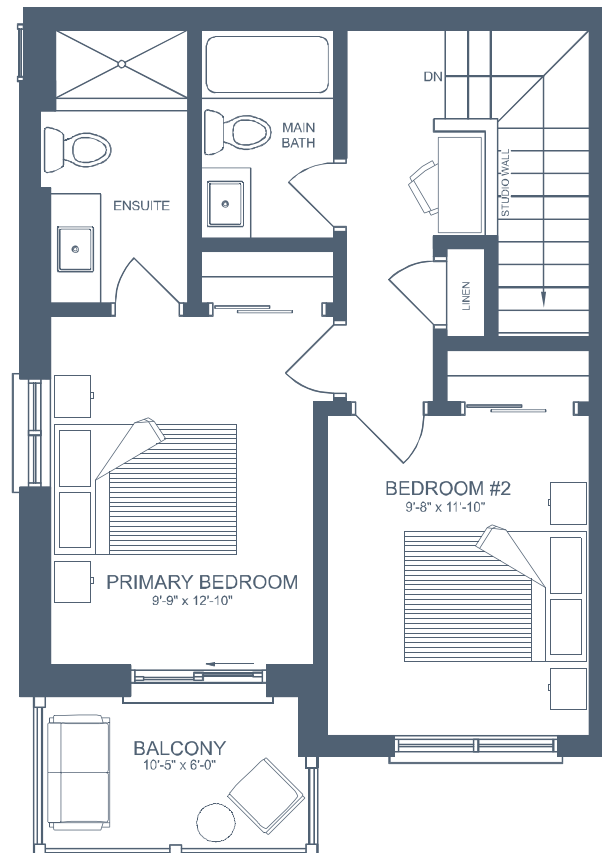
■ = UNIT LOCATION

All drawings are an artist's concept and may vary slightly from the final product. E. & O.E. Actual usable floor space may vary from stated area, and square footage has been calculated based on usable living space according to the Tarion rules. Drawings may show optional features which may not be included in the base price. Bulkheads and box outs may be required as chases for plumbing and mechanical. Location of mechanical room equipment will be located by the builder and may change based on plan. Number of steps in front entry may vary based on grade.

SECOND LEVEL



THIRD LEVEL



End Unit

REAR TWO-STOREY

UNIT DETAILS

2 BEDROOM

2 BATHROOM

2 BALCONIES

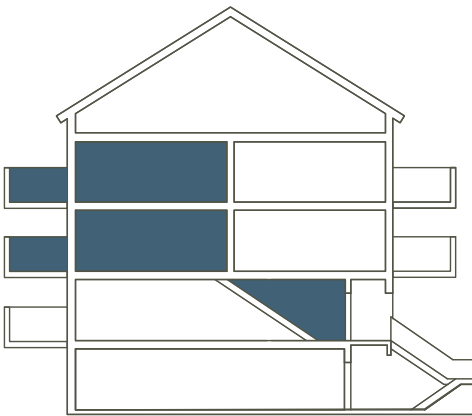
LIVING SPACE

INTERIOR 1,135 SQ. FT.

EXTERIOR 126 SQ. FT.

TOTAL 1,261 SQ. FT.

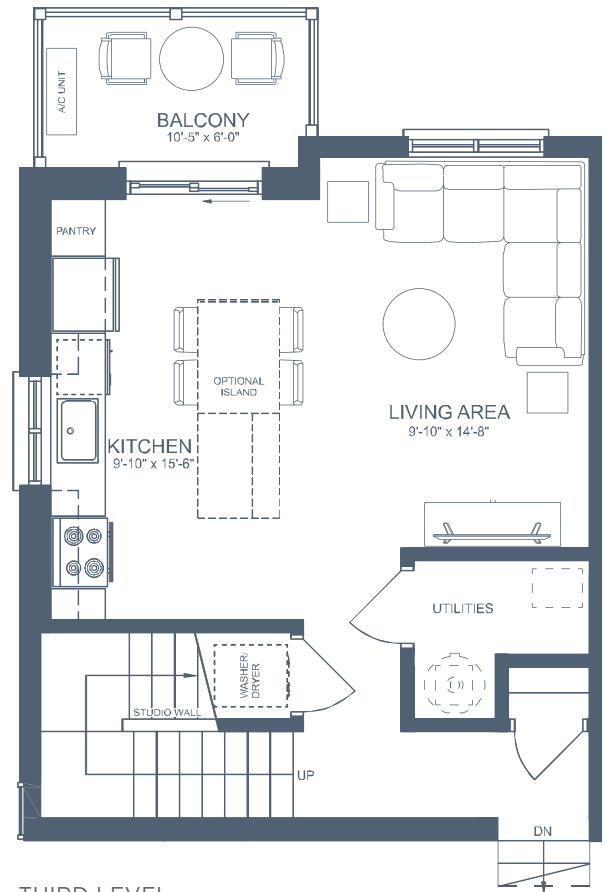
CROSS SECTION:



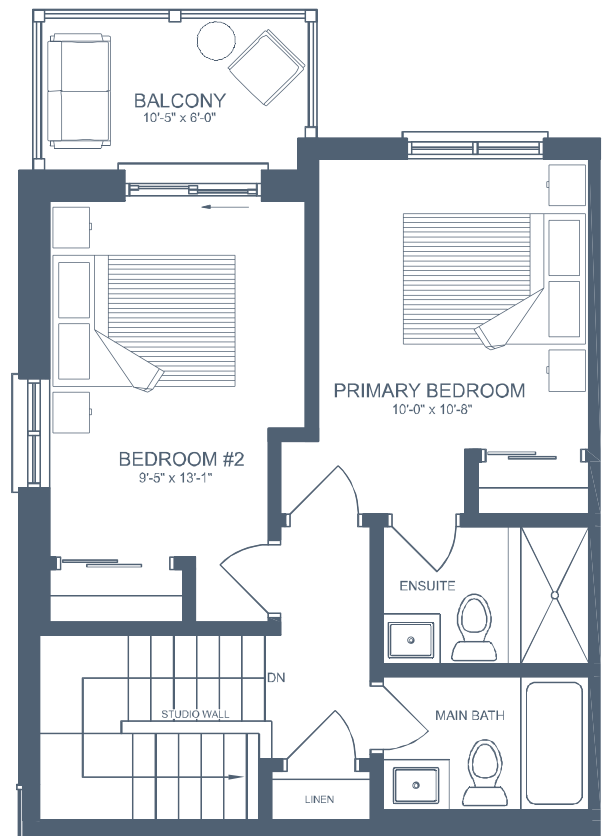
■ = UNIT LOCATION

All drawings are an artist's concept and may vary slightly from the final product. E. & O.E. Actual usable floor space may vary from stated area, and square footage has been calculated based on usable living space according to the Tarion rules. Drawings may show optional features which may not be included in the base price. Bulkheads and box outs may be required as chases for plumbing and mechanical. Location of mechanical room equipment will be located by the builder and may change based on plan. Number of steps in front entry may vary based on grade.

SECOND LEVEL



THIRD LEVEL



Enhanced End Unit

TERRACE LEVEL

UNIT DETAILS

2 BEDROOM

2 BATHROOM

BALCONY

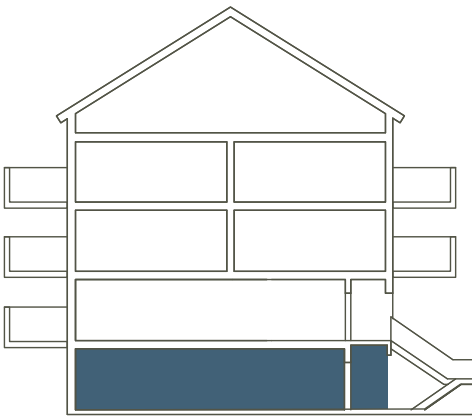
LIVING SPACE

INTERIOR 1,028 SQ. FT.

EXTERIOR 73 SQ. FT.

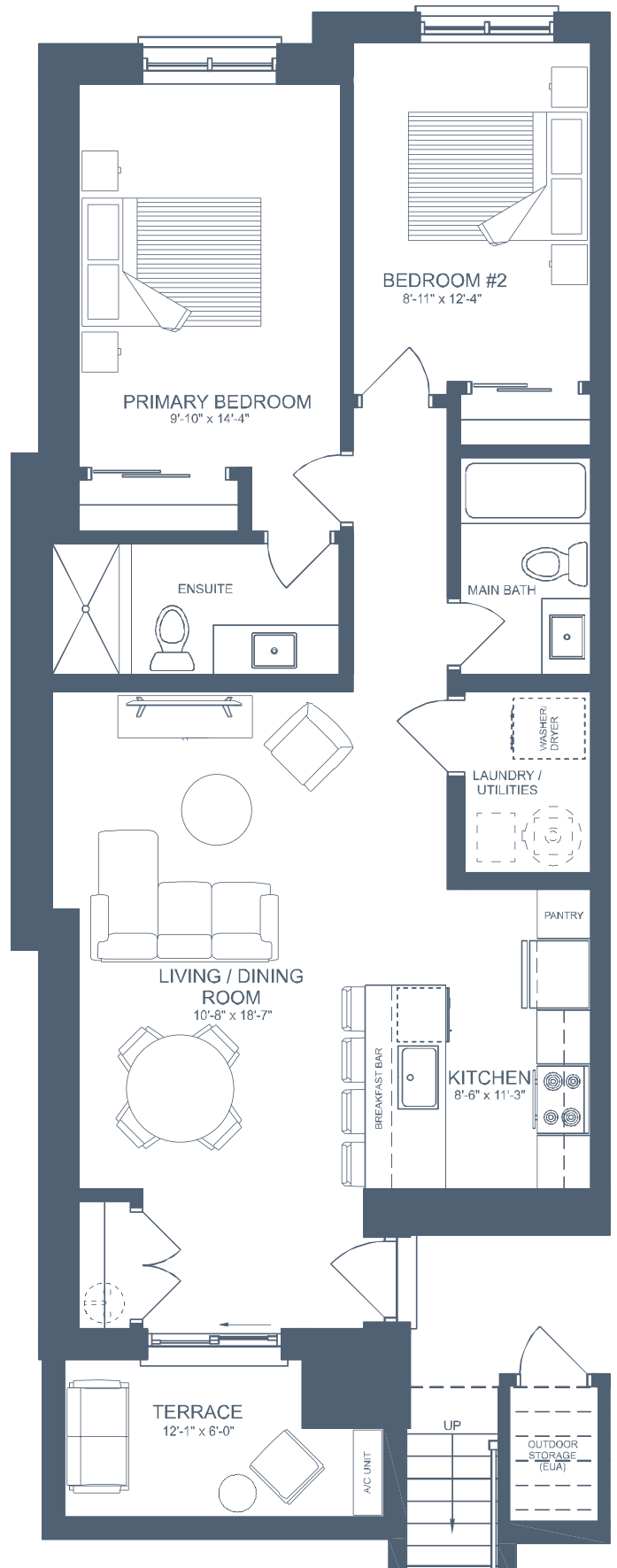
TOTAL 1,101 SQ. FT.

CROSS SECTION:



■ = UNIT LOCATION

All drawings are an artist's concept and may vary slightly from the final product. E. & O.E. Actual usable floor space may vary from stated area, and square footage has been calculated based on usable living space according to the Tarion rules. Drawings may show optional features which may not be included in the base price. Bulkheads and box outs may be required as chases for plumbing and mechanical. Location of mechanical room equipment will be located by the builder and may change based on plan. Number of steps in front entry may vary based on grade.



Enhanced End Unit

MAIN LEVEL

UNIT DETAILS

2 BEDROOM

2 BATHROOM

BALCONY

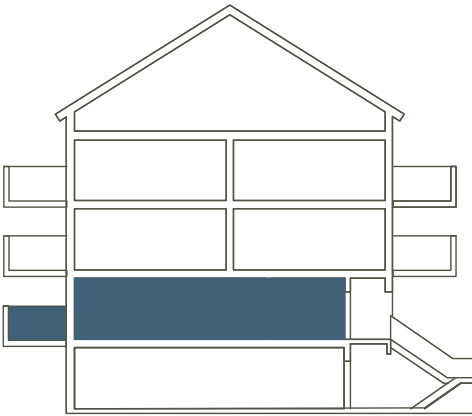
LIVING SPACE

INTERIOR 903 SQ. FT.

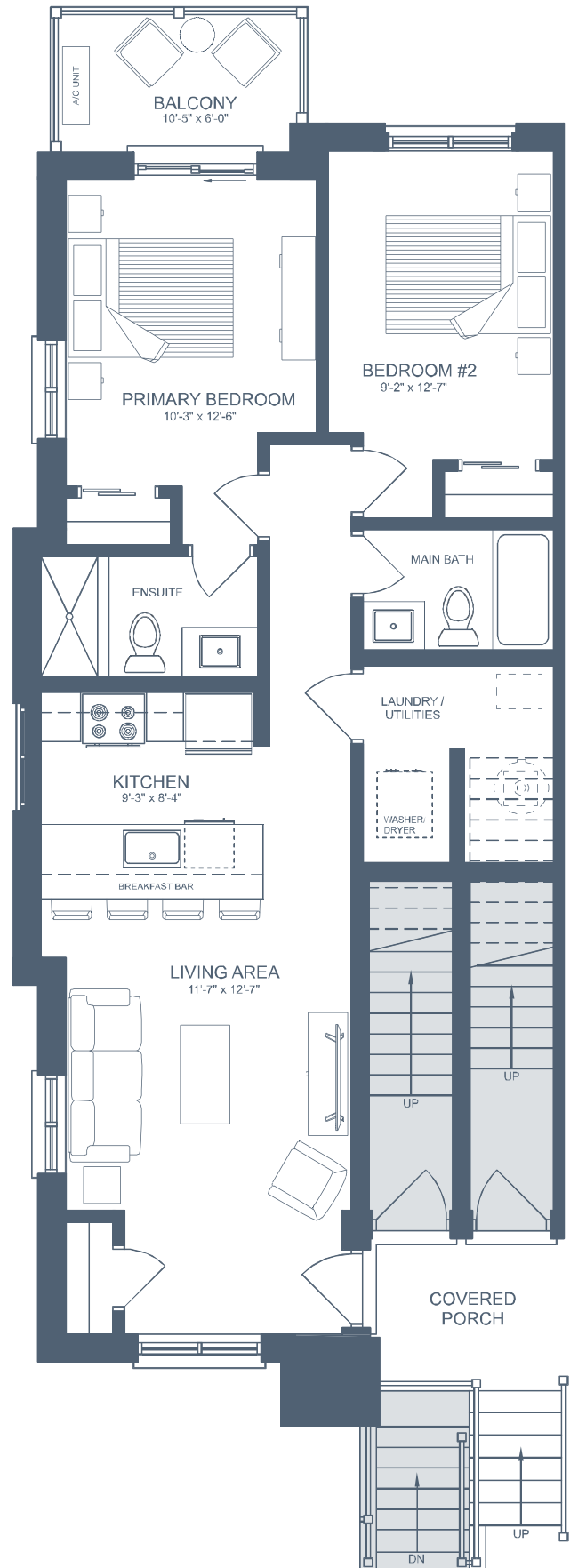
EXTERIOR 63 SQ. FT.

TOTAL 966 SQ. FT.

CROSS SECTION:



■ = UNIT LOCATION



All drawings are an artist's concept and may vary slightly from the final product. E. & O.E. Actual usable floor space may vary from stated area, and square footage has been calculated based on usable living space according to the Tarion rules. Drawings may show optional features which may not be included in the base price. Bulkheads and box outs may be required as chases for plumbing and mechanical. Location of mechanical room equipment will be located by the builder and may change based on plan. Number of steps in front entry may vary based on grade.

Enhanced End Unit

FRONT TWO-STOREY

UNIT DETAILS

2 BEDROOM

2 BATHROOM

BALCONY

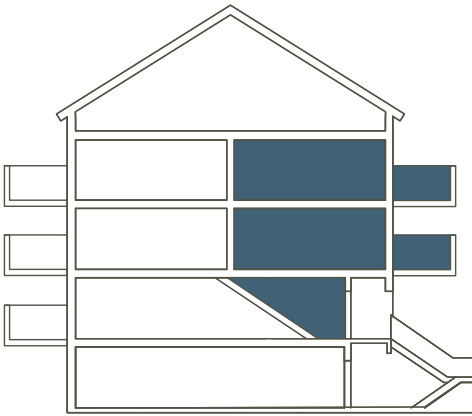
LIVING SPACE

INTERIOR 1,142 SQ. FT.

EXTERIOR 126 SQ. FT.

TOTAL 1,268 SQ. FT.

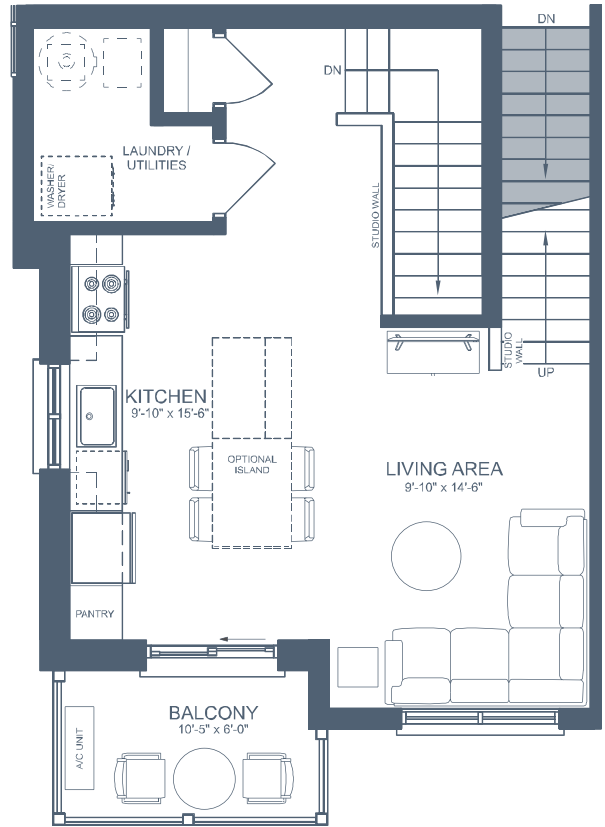
CROSS SECTION:



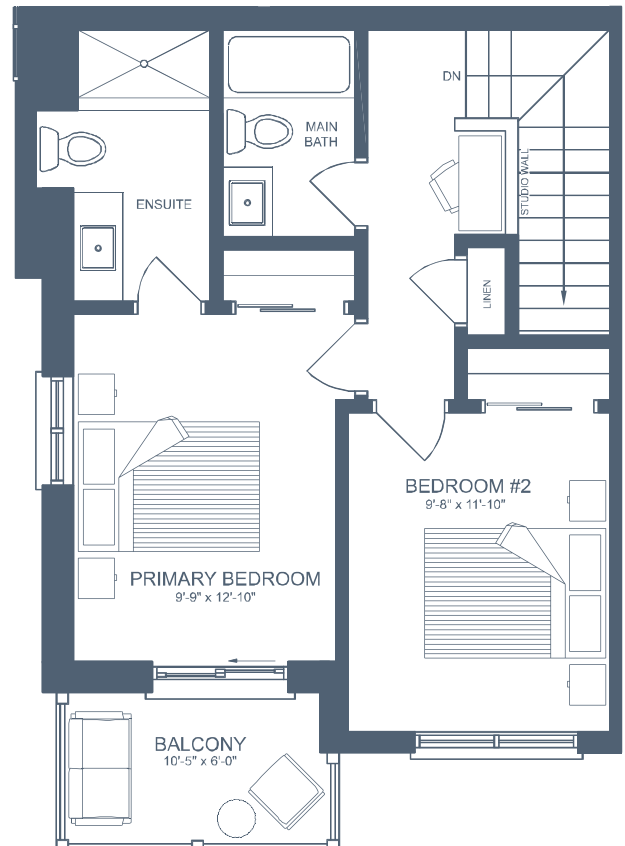
■ = UNIT LOCATION

All drawings are an artist's concept and may vary slightly from the final product. E. & O.E. Actual usable floor space may vary from stated area, and square footage has been calculated based on usable living space according to the Tarion rules. Drawings may show optional features which may not be included in the base price. Bulkheads and box outs may be required as chases for plumbing and mechanical. Location of mechanical room equipment will be located by the builder and may change based on plan. Number of steps in front entry may vary based on grade.

SECOND LEVEL



THIRD LEVEL



Enhanced End Unit

REAR TWO-STOREY

UNIT DETAILS

2 BEDROOM

2 BATHROOM

BALCONY

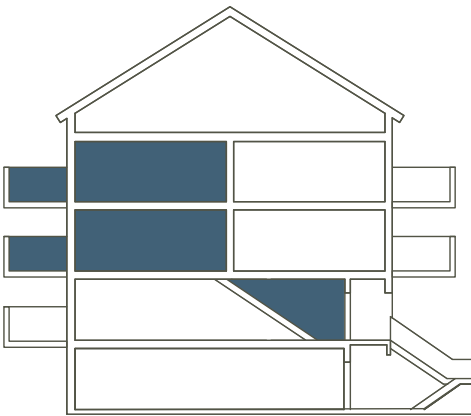
LIVING SPACE

INTERIOR 1,152 SQ. FT.

EXTERIOR 126 SQ. FT.

TOTAL 1,278 SQ. FT.

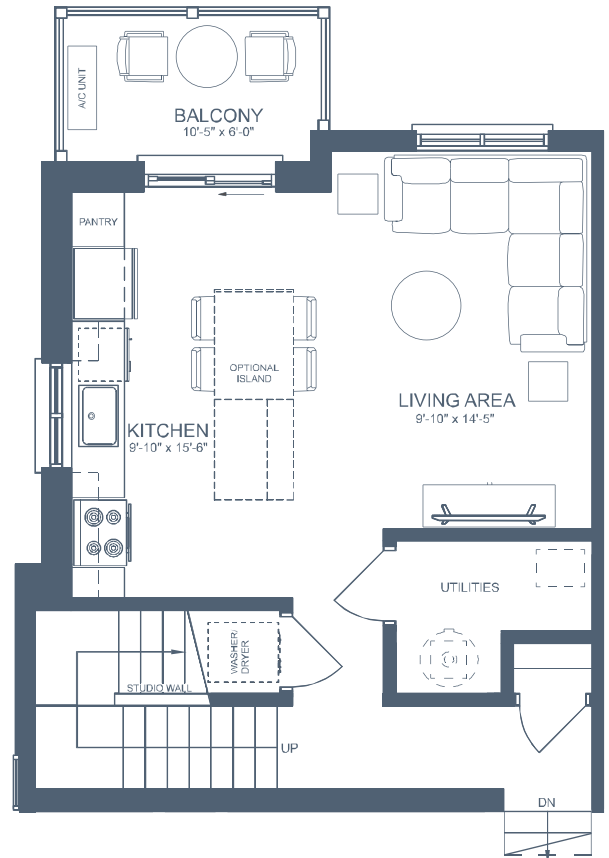
CROSS SECTION:



■ = UNIT LOCATION

All drawings are an artist's concept and may vary slightly from the final product. E. & O.E. Actual usable floor space may vary from stated area, and square footage has been calculated based on usable living space according to the Tarion rules. Drawings may show optional features which may not be included in the base price. Bulkheads and box outs may be required as chases for plumbing and mechanical. Location of mechanical room equipment will be located by the builder and may change based on plan. Number of steps in front entry may vary based on grade.

SECOND LEVEL



THIRD LEVEL

