







IN THE  
**SPIRIT**  
OF THE  
**GOOD**  
**LIFE**



## SPIRITED, VIBRANT, YOUTHFUL

*A masterfully-designed community of beautiful stacked and rear lane towns, centrally located, with easy access to transit and an abundance of amenities. It's a thriving community and a captivating neighbourhood to call home. And like all Reid's Heritage Homes built over the last 45 years, your home will be built with quality, care and craftsmanship.*

*Feel the buzz!*

# A TIMELESS HOME WITH YOUTHFUL SPIRIT

## Your stylish life

Welcome to a world where modern designs seamlessly blend with the art of living. Residences offer exquisite floorplans, catering to open concept living boasting dreamy kitchens and expansive windows, redefining the boundaries of beauty and functionality. Experience a life where every detail is meticulously designed to elevate your living experience. Where your home becomes the embodiment of contemporary luxury.

Feel at home!



# ELEVATED BEAUTY

Welcome home to luxury

*Thoughtfully designed spaces and a meticulously crafted layout promote a sense of well-being and balance. Whether you're entertaining guests or relaxing after a long day, come home to a place where you can fully immerse yourself in the art of living and embrace a lifestyle that is both luxurious and fulfilling.*

*Feel the energy!*





# MODERN ELEGANCE

Welcome home to style

*Bright, spacious, welcoming and extremely stylish. Your home will impress with every detail - from the timeless finishes, to the breathtaking views, to perfectly-planned kitchens and spacious floorplans, it's a home you'll be proud to share with others.*

*Feel the energy!*





IN THE  
SPIRIT OF  
EXCITING  
LIVING

## ARTFUL LIVING

**Discover the magic**

*Want to be right in the heart of a vibrant city? Steps away from are all of the modern conveniences you have come to expect, including well-known pharmacies, restaurants, coffee shops, and fitness centres. Outdoor spaces like Orin Reid Park Playground, Gosling Gardens Park and Westminster Woods Trail bring the community together and provide a wonderful respite from the daily hustle.*

*Historic downtown is centrally located and only a short drive. You'll also find numerous restaurants, grocery stores, one-of-a-kind boutiques, cafés, and professional services for all of your family's needs. Events happen all-year long and bring the city together.*

*The best of both worlds - city conveniences and small-town charm. Your life in the city will be spirited, vibrant, connected and rewarding.*

**Feel the excitement!**



# LIVING THE GOOD LIFE

*Big city amenities, delicious eating, fun living... welcome to an incredible place to call home. Steps to the best culture, nightlife, opportunities, restaurants, galleries, shopping and a major university. It's a stunning neighbourhood set in thriving area.*

**Feel the fun!**



SPIRITED,  
VIBRANT,  
EASY LIVING  
AT ITS BEST.

## SHOPPING

Everyone loves grabbing a delicious treat from Balzac's on a Saturday morning and heading out to do a little shopping, and here you are in luck. You are surrounded by countless shopping options, including the city's charming downtown filled with unique shops and independent stores like Rug and Weave and the eclectic On The Verge.

## DELICIOUS DINING

Enjoy the countless dining establishments within walking distance such as Borealis Grille and Bar, or Boathouse - a locally sourced tearoom and ice cream parlour located just off the Speed River. Visit Downtown, with patios that line the streets. You'll find bakeries, cafés butchers, food specialty stores, and so much more.

## FUN ACTIVITIES

Outdoor adventure in the city begins at Hanlon Creek Park and South End Community Park for the splash pads, and continues at Lyon Leisure Pool for outdoor swimming. For your four-legged friends, the south end is home to the area's biggest leash-free dog park. The City runs various city libraries and recreation centres that offer swimming, skating, and more. Golfing is a dream, with options including Victoria Park Valley Golf Course and Turtle Creek Golf Club, to name just a few. Don't miss the Hillside Festival, a not-for-profit music and artistic expression festival, attended by thousands annually.

## TIME TO EXPLORE

We love Preservation Park! Home to hiking trails and expansive boardwalks in the middle of the city, with an entrance just a stone's throw away. Discover the beauty of the Arboretum, which offers various nature trails through 400 acres of gardens, woodlands and meadows. Don't forget to discover Aberfoyle. Aberfoyle provides great day trip options like Starkey Hill Conservation Area and Fletcher Creek Ecological Preserve. Only ten minutes away from the 401 and 45 minutes to the airport, making it easy access for commuters and travelers of any kind.

## OPPORTUNITY & CULTURE

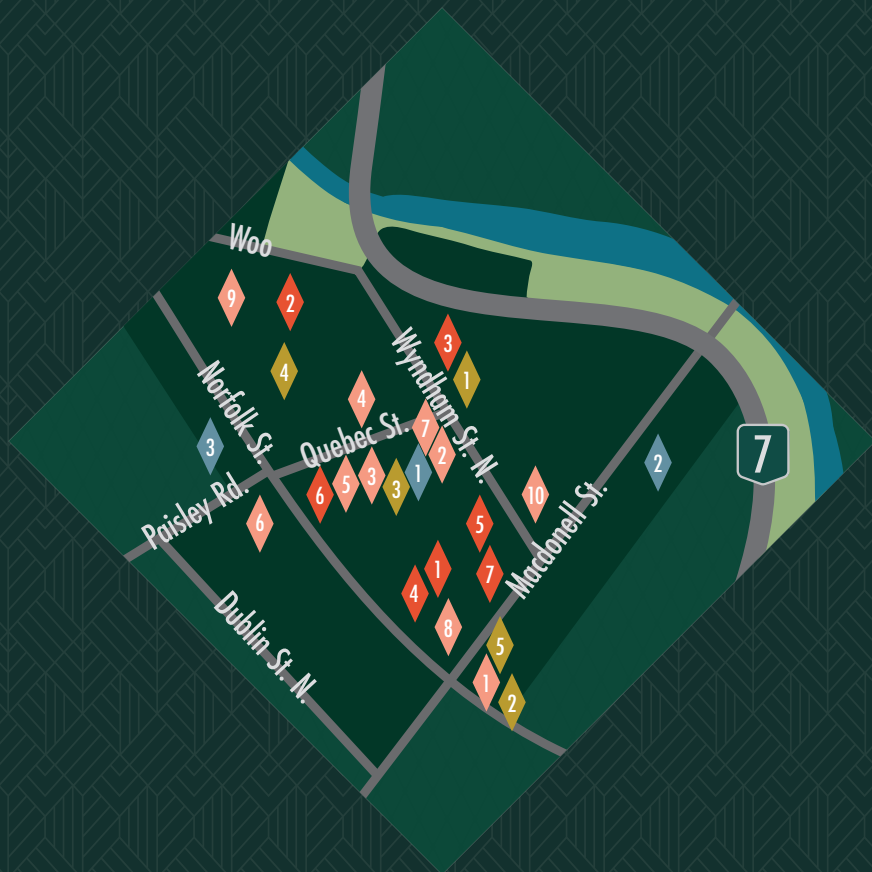
The University is minutes away, providing excellent postsecondary education and job opportunities. Conestoga College is a leader in polytechnic education and one of Ontario's fastest growing colleges. Both Wilfrid Laurier University and University of Waterloo are also within driving Distance. Major industries include advanced manufacturing, agriculture and food innovation, and environmental management and technology, as well as a plentiful creative scene.

For art and museum lovers, much to offer. The Art Gallery, The Garden House Art Gallery, Renann Isaacs Contemporary Art, the McCrae House, the Civic Museum, Locomotive 6167 and The Children's Art Factory. Home to the University of Guelph's School of the Arts, you'll discover art in and around the city everywhere.

# CHARMS

WITH FABULOUS AMENITIES  
AND A COVETED LOCATION

## WELCOME TO DOWNTOWN



CHECK OUT THE APPROXIMATE DRIVE TIMES TO THE FOLLOWING CITIES:

TORONTO  
1 HOUR

HAMILTON  
40 MIN

WATERLOO REGION  
25 MIN

MILTON  
25 MIN

## SOME DOWNTOWN FAVOURITES

### DINING

1. Atmosphere Cafe + Etc.
2. Baker Street Station
3. Buon Gusto Restaurant
4. Crafty Ramen
5. La Reina
6. Mijjida
7. Royal Electric Bar

### ARTS & CULTURE

1. Gritt Gallery
2. Farmer's Market
3. The Bookshelf
4. The Children's Art Factory
5. Market Square

### SHOPPING

1. Grit & Grace
2. If Footwear
3. Kennedy Park
4. Lady Glaze Doughnuts
5. Lovely Co
6. Market Fresh
7. Play with Clay
8. Rug & Weave
9. Sunday General Store
10. The Patch

### COMMUNITY

1. Downtown
2. Business Association
3. Central Station (Go Train)



# IN THE SPIRIT OF COMFORT

STACKED TOWNHOMES

## THE PERFECT PLAN

### Modern towns

*Our townhome floorplans have been expertly designed and make use of every inch of space to fully optimize your home's size. This means you can live large and easy in spaces that feel both cosy and spacious*

*Feel the comfort!*

UNIT 1

# THE CHELSEA

THE TERRACE SUITE | 900 SQ. FT.  
2 BED | 2 BATH

UNIT 2

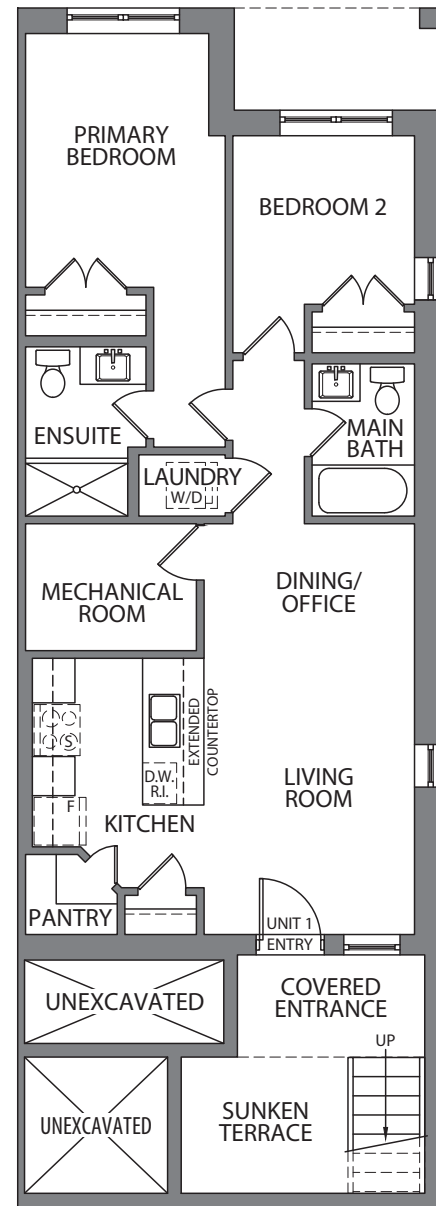
# THE MADISON

THE MAIN FLOOR SUITE | 780 SQ. FT.  
2 BED | 2 BATH

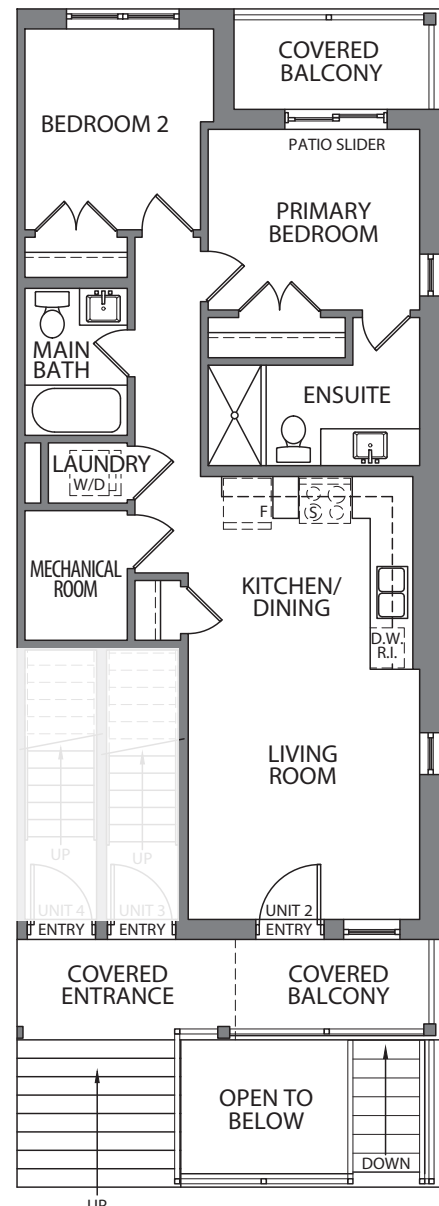
UNIT 3

# THE HUNTER

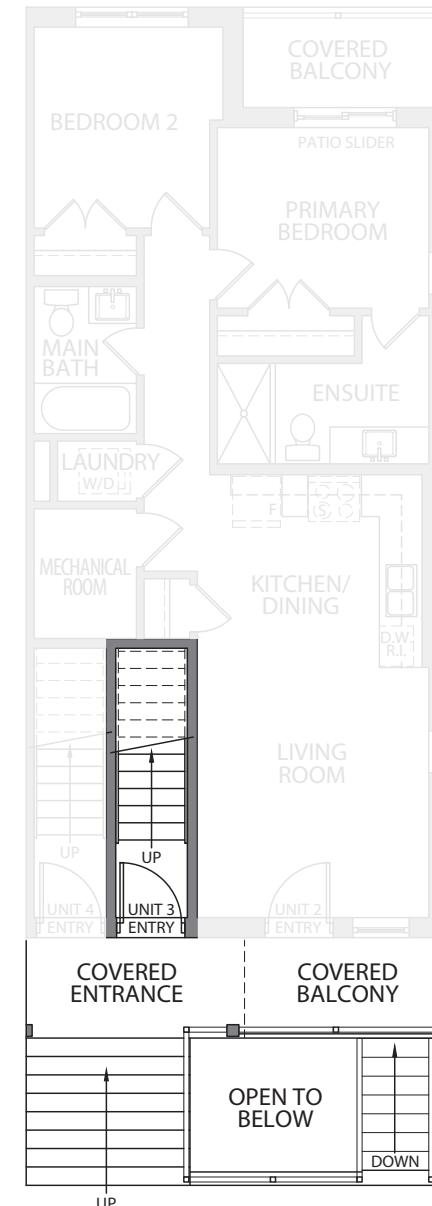
THE FRONT UPPER SUITE | 1,050 SQ. FT.  
2 BED | 2 BATH



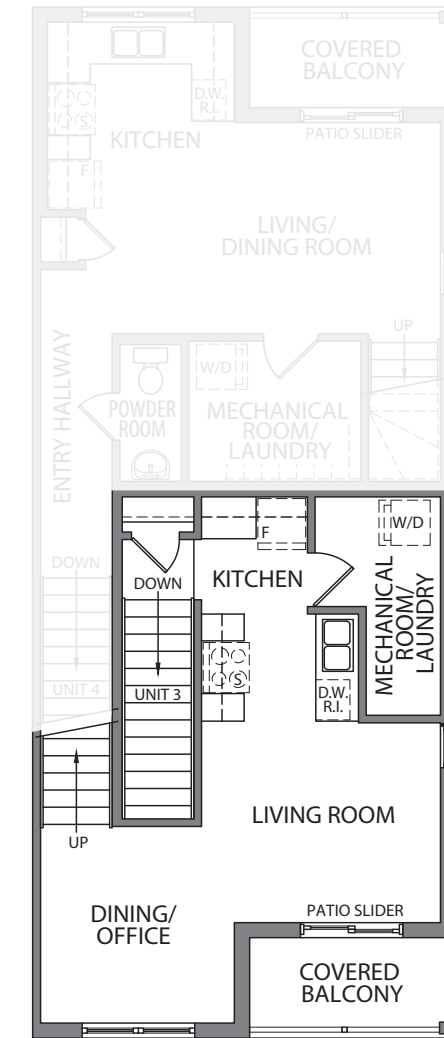
TERRACE LEVEL



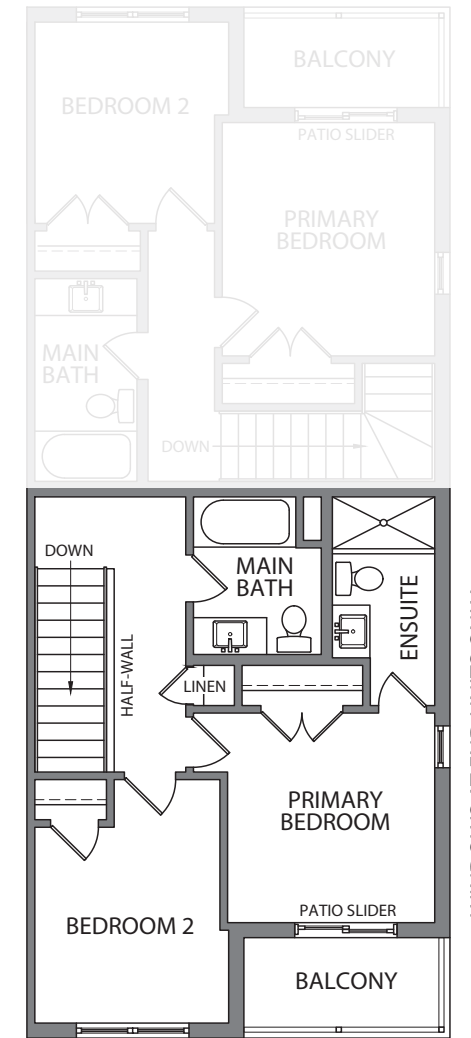
MAIN LEVEL



MAIN LEVEL



SECOND LEVEL



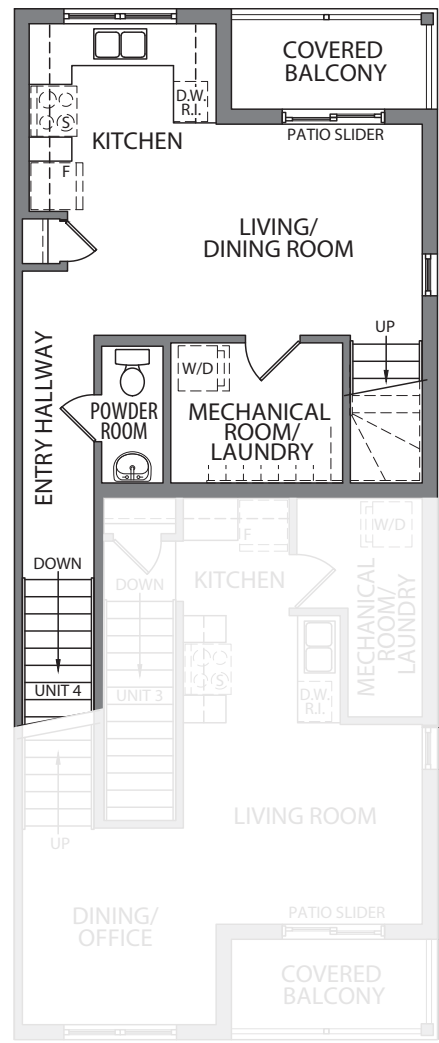
THIRD LEVEL

# THE KENNEDY

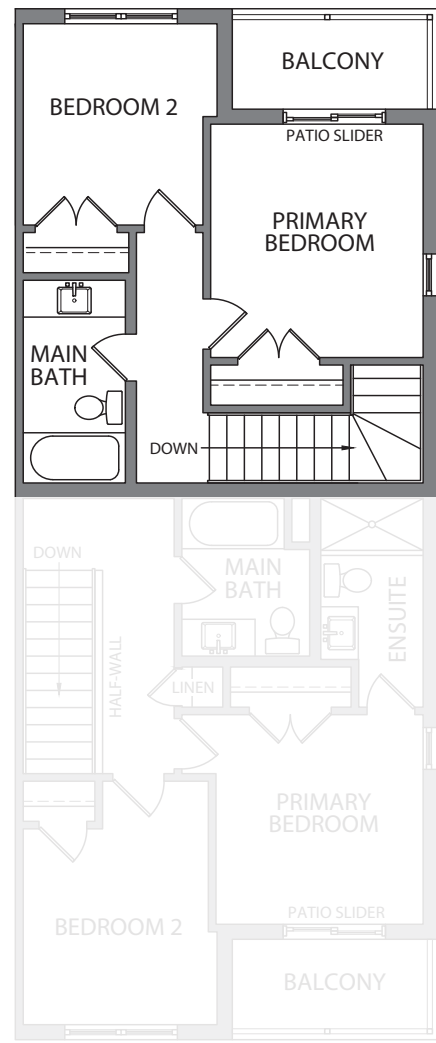
THE REAR SUITE | 980 SQ. FT.  
2 BED | 1.5 BATH



MAIN LEVEL



SECOND LEVEL



THIRD LEVEL

WINDOWS AT END UNITS ONLY

WINDOWS AT END UNITS ONLY



# IN THE **SPiRiT** OF COMFORT

REAR LANE GARAGE TOWNHOMES

## THE PERFECT PLAN

### Rear lane garage townhomes

*Our Rear Lane Townhomes are loved by our homeowners, and it's no wonder when thoughtfully designed spaces are the norm. You'll discover open functional areas, modern kitchens, convenient rear access, garages, innovative floor plan options, and charming porches and balconies - it's smart design making use of every inch of space and offering both style and function!*

*Feel the ease!*



UNIT 1

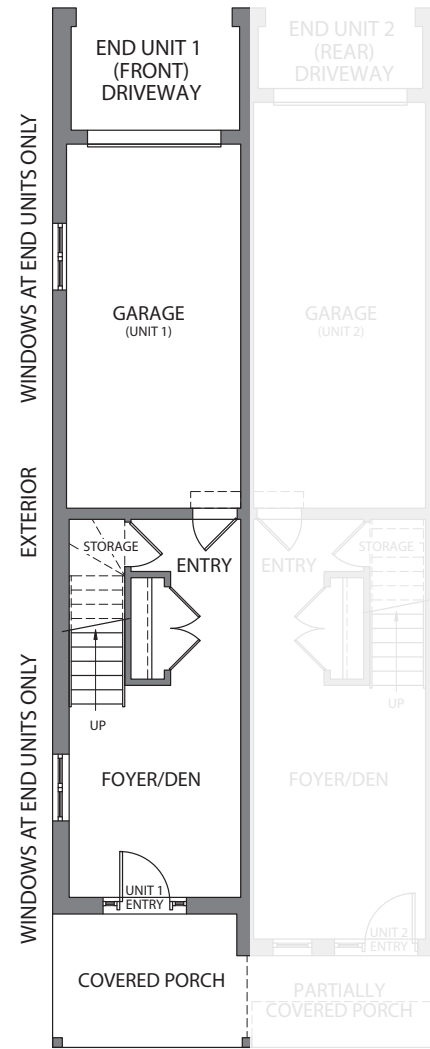
# THE TAYLOR

THE FRONT SUITE | 1,390 SQ. FT.  
2 BED | 2.5 BATH

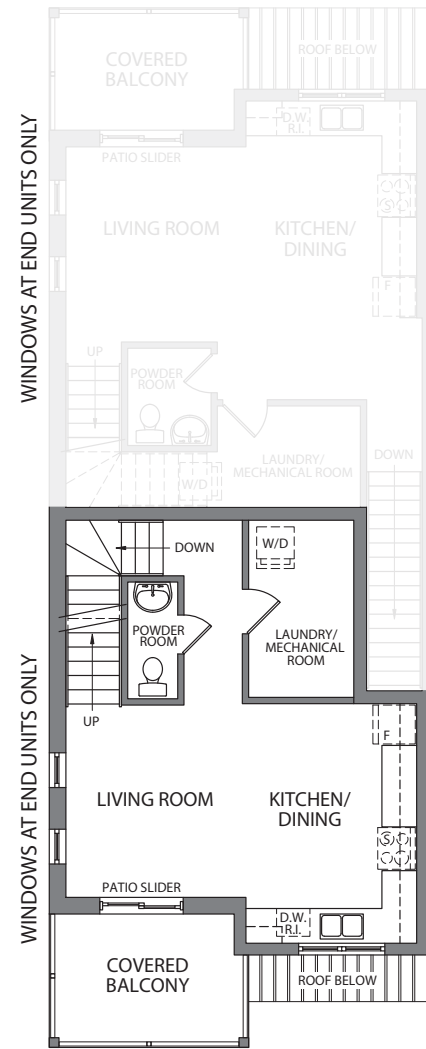
UNIT 2

# THE WESTON

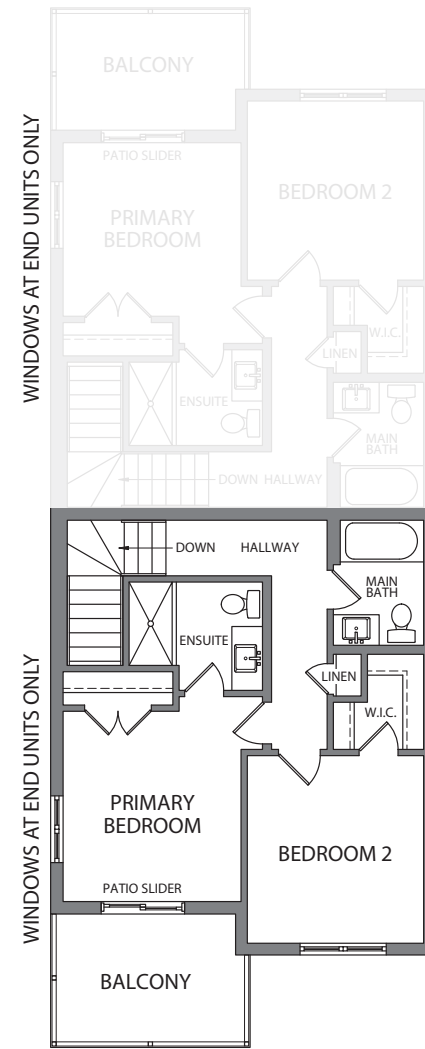
THE REAR SUITE | 1,445 SQ. FT.  
2 BED | 2.5 BATH



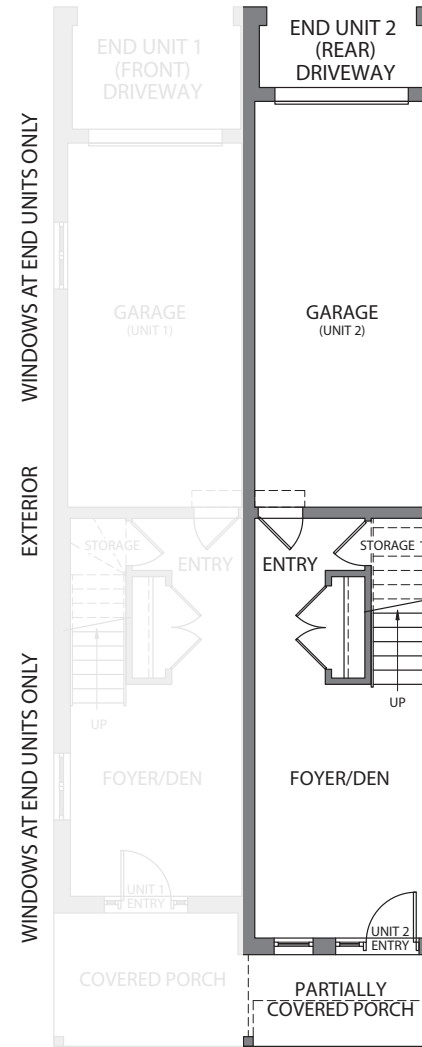
MAIN LEVEL



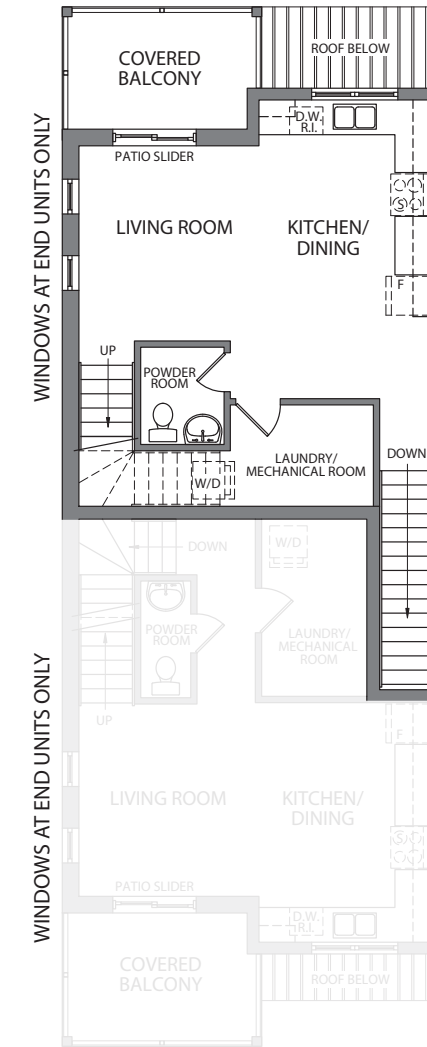
SECOND LEVEL



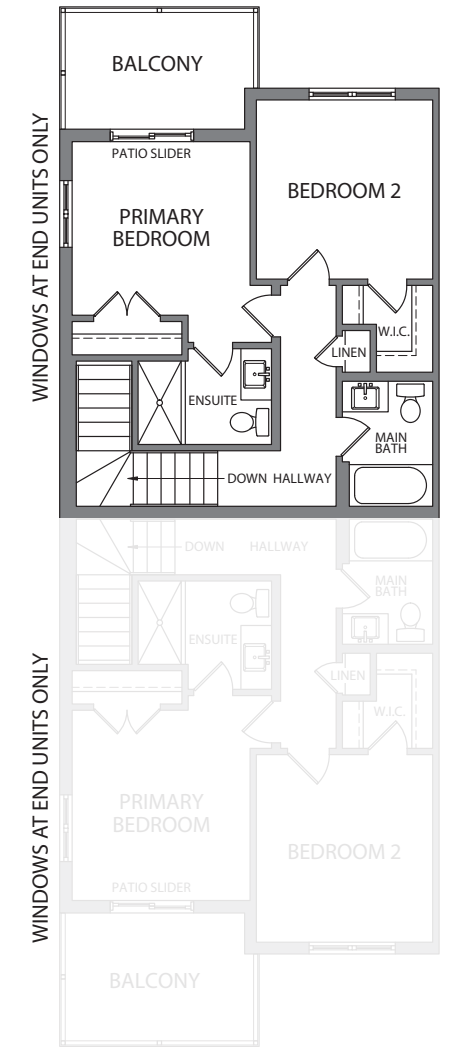
THIRD LEVEL



MAIN LEVEL



SECOND LEVEL



THIRD LEVEL



## THOUGHTFUL DESIGNS

**For living the good life**

*Nestled between the heart of the city, green spaces and exciting amenities. A community where you'll live your best life. It's a place you'll love coming home to, a community masterfully-planned that feels welcoming and exciting. It's the home you've been dreaming of!*

**Feel the love!**



# IN THE SPIRIT OF CHOICE

## URBAN STACKED TOWNHOMES

THE CHELSEA  
TERRACE SUITE  
900 SQ. FT.

THE MADISON  
MAIN FLOOR SUITE  
780 SQ. FT.

THE HUNTER  
FRONT UPPER SUITE  
1,050 SQ. FT.

THE KENNEDY  
REAR UPPER SUITE  
980 SQ. FT.

## REAR LANE GARAGE TOWNHOMES

THE TAYLOR  
FRONT SUITE  
1,390 SQ. FT.

THE WESTON  
REAR SUITE  
1,445 SQ. FT.



Drawing is Artist's concept only and may vary pending final product and site plan approvals. All information is deemed accurate at time of printing and may change depending on final survey. All information is based on preliminary drawings. Final lot sizes, shape, grading, light standard locations, utility transformer locations, sidewalk and driveway locations are subject to final site plan approval & various utility preferences may change. E & O.E. January 2024

# THERE'S SO MUCH TO LOVE

*Connect with others, enjoy time alone, host a dinner party, embark on a night out, or an adventure... no matter your mood, the easy location and exciting vibe is the perfect place to start creating moments you'll never forget.*

*Feel the adventure!*



# IN THE SPIRIT OF GOOD DESIGN

## DESIGNER INSPIRATION PACKAGES

*For stylish & functional living*

The design experts at Reid's Heritage Homes have carefully selected stunning design packages that truly shine!

You'll choose from beautiful selections that will enhance your home and make it personally yours. With a lovely choice of materials, colour palettes and finishes that have been expertly curated, your home is sure to be stylish, comforting and as unique as you.

### ESPRESSO MACCHIATO



### BONE DRY CAPPUCCINO



### FLAT WHITE

### COLD BREW



### LONDON FOG LATTE

